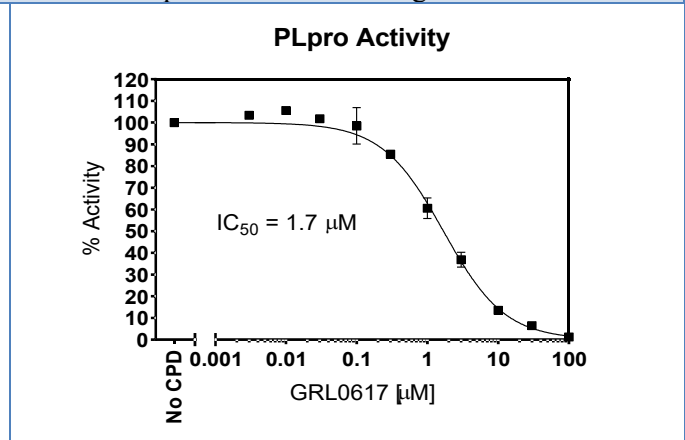
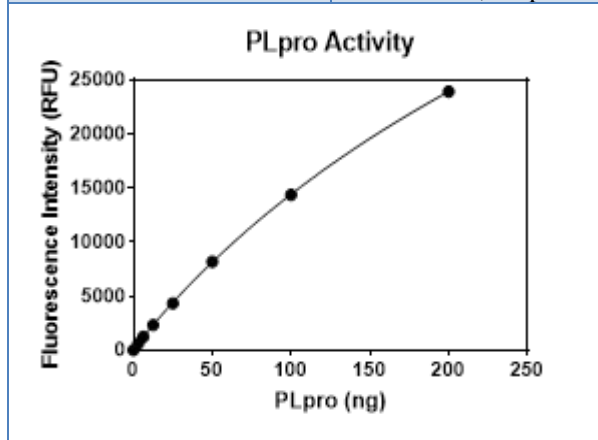


Product Name	Recombinant SARS-CoV-2 PLpro (Papain-like Protease)	<p>SDS-PAGE gel</p>
Synonym(s)	2019-nCoV PLpro, Papain-like Protease, COVID-19 NSP3, Carrier Free	
Quantity	50 µg, 100 µg, 1 mg	
Lot Number	B00825	
Concentration	1 mg/ml	
Molecular weight	37 kDa	
Purity	>95% by SDS-PAGE	
Tag	N-terminal His Tag	
Expression Source	E. coli	
GenBank Accession #	QJA17107.1, Gly1564 -Thr1882	
Application	Inhibitor Screening, activity assay	
Formulation	25 mM HEPES, pH7.4, 100 mM NaCl, 2 mM DTT, 10% Glycerol	
Storage and Stability	Stable for 12 months at -80°C, Avoid freeze/thaw cycles	
Description	<p>SARS-CoV-2 Papain like protease (PLpro) is one of the viral proteases to process viral polypeptide to functional proteins, the process essential for viral transcription, replication and virion assembly. PLpro can deubiquitinate host cell proteins and inactivate the NF-κB pathway, resulting in the immune suppression of host cells. Due to its multiple roles in viral replication and host cell control, PLpro is considered a potential antiviral target.</p>	



**Assay Condition:**

The enzymatic reactions are performed at 10 $\mu$ M substrate (catalogue number 728258), indicated amount of PLpro enzyme in 1X protease assay buffer (catalogue number 728205) at room temperature for 1 hour. The fluorescence intensity is measured at exc/em 360 nm/460 nm.

**Reference**

Drag M., et al., Biochem J. 2008. 415(3):367-375.  
Rut W., et al., Version 2. bioRxiv. Preprint. 2020 Apr 29.

This product is for research use only and not for diagnostic or therapeutic use.

**RELATED PRODUCTS:**

Name of Products	Catalog#	Size
Recombinant SARS-CoV-2 Mpro, 3CL protease, CF	728201-1	50 $\mu$ g
	728201-2	500 $\mu$ g
SARS-CoV-2 Mpro Assay Kit, 3CL Protease Assay Kit	728203	96 rxns
SARS-CoV Protease Assay Buffer (2X),	728205	20 ml
Mpro substrate, SARS-CoV-1/SARS-CoV-2	728208	1 mg
Recombinant SARS-CoV-2 Helicase (NSP13)	728231-1	10 $\mu$ g
	728231-2	50 $\mu$ g
	728231-3	100 $\mu$ g
Recombinant SARS-CoV-2 Nucleocapsid phosphoprotein (N)	728241	100 $\mu$ g
Papain-like Protease Assay Kit	728253	96 rxns
Papain-like Protease substrate	728255	1 mg
RNA-dependent RNA polymerase (NSP12), Recombinant SARS-CoV-2	728261	100 $\mu$ g
RNA-dependent RNA polymerase (NSP7, NSP8, NSP12 Complex), Recombinant SARS-CoV-2	728263	20 $\mu$ g
SARS-CoV-2 NSP7, Recombinant	728264-1	100 $\mu$ g

# Recombinant SARS-CoV-2 PLpro

Catalog Number: 728251

	728264-2	1 mg
SARS-CoV-2 NSP8, Recombinant	728265-1	100 µg
	728265-2	1 mg